



CHILDREN'S MENU

MAIN MEALS

- ★ Chicken goujons
- ★ Fish fingers
- ★ Cheese burger
- ★ Sausages (GF)

*Served with a choice of
Chips or new potatoes
and a choice of
beans, peas or salad*

- ★ Tomato and basil pasta
with garlic bread
- ★ Chicken salad
- ★ Cheese salad

*Served on a bed of coleslaw,
mixed leaf salad, cucumber
and tomatoes*



DESSERTS

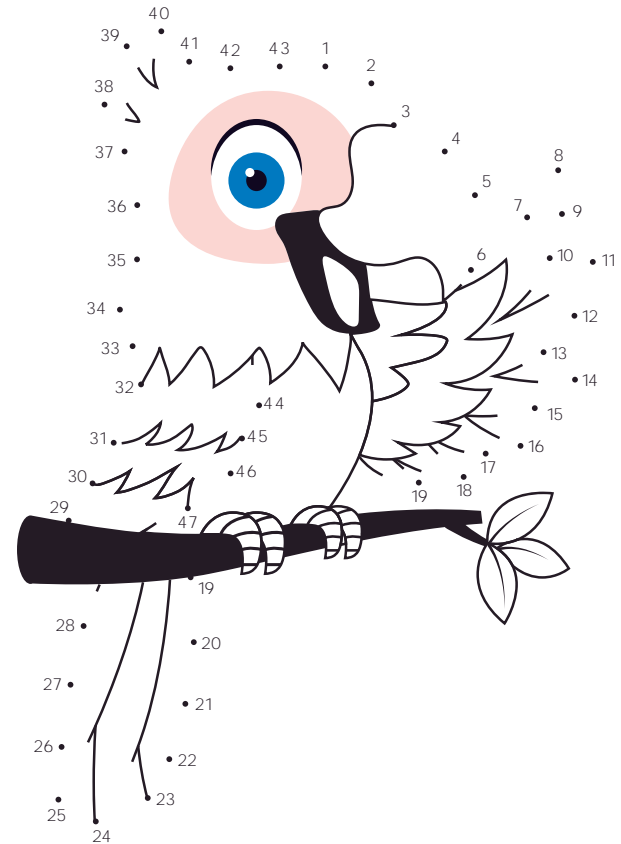
- ★ Ice cream
- ★ Jelly
- ★ Chocolate brownie (GF)

DRINKS

- ★ Fruit Shoot
orange, blackcurrant or apple
- ★ Milk

**Main + Dessert
+ Drink**

£10.00



JOKERS CORNER

WHY IS A SNAKE DIFFICULT TO FOOL?
YOU CAN'T PULL ITS LEG!

WHAT KIND OF KEY OPENS A BANANA?
A MON-KEY!

WHAT DID THE 0 SAY TO THE 8?
NICE BELT!

HOW DOES DARTH VADER LIKE HIS TOAST?
ON THE DARK SIDE!





U S U N Y E K N O M A L O L X V
 C X L L B O O S T A R F I S H C
 A H K F Y O N I U G N E P V E S
 S N R A L L I G A T O R D J B S
 T O W E L I J T L F G E E C N H
 L R H I N O E Y P K D J E W I C
 E H J S R S N A K E E Y H P P E
 E F F A R I G Y T L H G P D A F
 H N R T O U C A N P S O A G D L
 P H F R E C B Y P O H N N L E A
 O G W E Z X F Q F T E I D F P M
 L W I M L I N L I O N U A F M I
 A J Z P S E C T B G L I R H V N
 R S W E L N P U R S S I S W I G
 B F D E B W C H P N E U R T X O
 E P G S A R D E A B T A V I D K
 A H O V C X A D E N N B L G A R
 R F R C O C E E A P T C A E P S
 T T I T L E M A C R A L S R M O
 J I L E W I A I H E A I G T O D
 C O L A T D C I J O T F C O P S
 B F A B C P O K K A N G A R O O
 G P E L I C A N E A S H J K F F

- | | | |
|-----------|----------|------------|
| ALLIGATOR | KANGAROO | POLAR BEAR |
| CAMEL | KOALA | RHINO |
| ELEPHANT | LION | SEAL |
| FLAMINGO | MONKEY | SNAKE |
| GIRAFFE | PANDA | TIGER |
| GORILLA | PELICAN | TOUCAN |
| HIPPO | PENGUIN | ZEBRA |



A MUDDLE ON THE BEACH

NUSASLSGSE

HAFSSRTI

TIKE

--	--	--	--	--	--	--	--	--	--	--	--	--	--	--	--	--	--	--	--	--